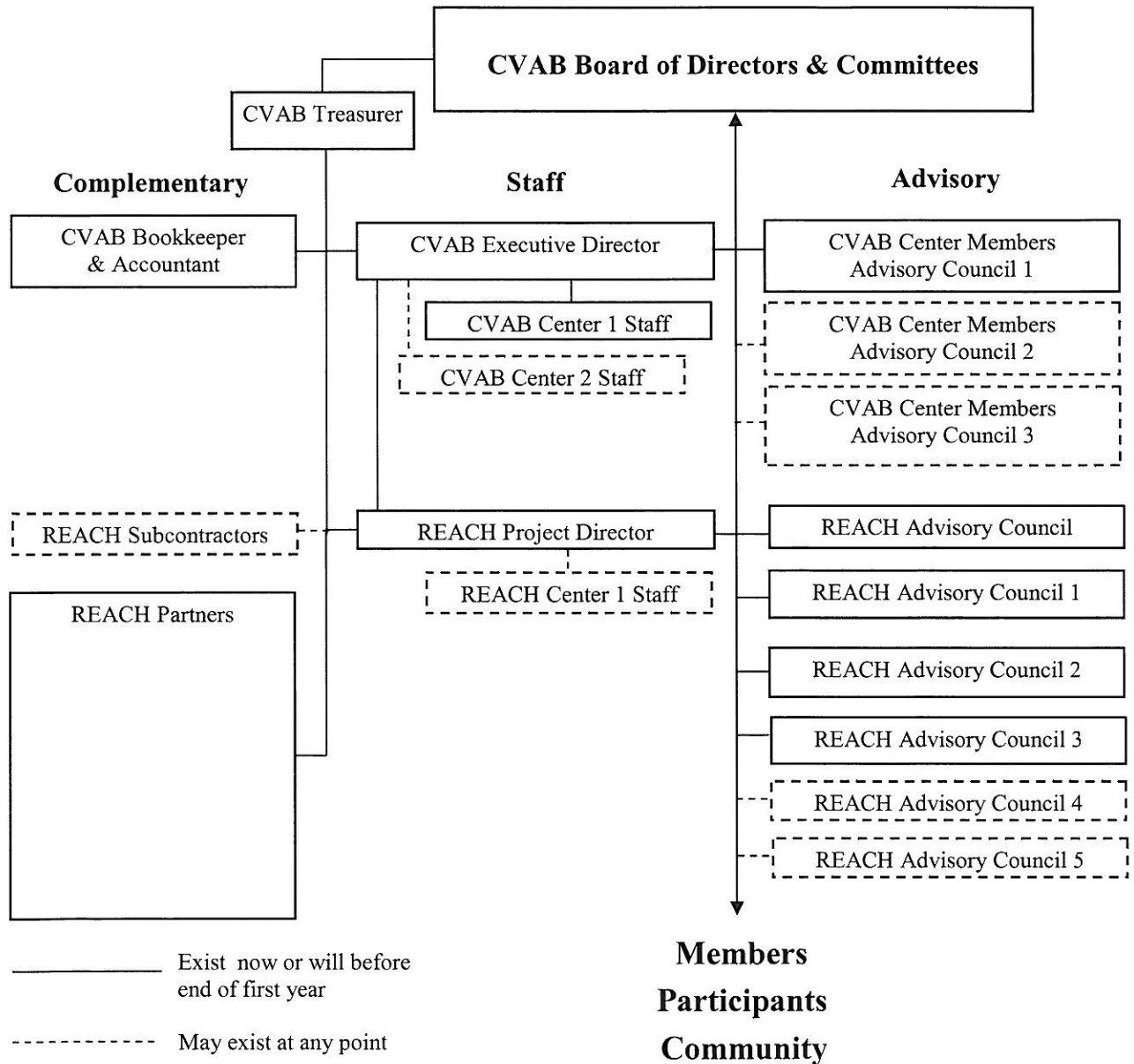


Regionally Empowered and Accessible Communities of Hope

To develop **Regionally Empowered and Accessible Communities of Hope** ...organized and run by individuals in recovery...forming the REACH WA Network...providing technical assistance to consumer operated services.

Organizational Chart



Regionally Empowered and Accessible Communities of Hope

To develop **Regionally Empowered and Accessible Communities of Hope** ...organized and run by individuals in recovery...forming the REACH WA Network...providing technical assistance to consumer operated services.

REACH Workgroups

